



*Yorkshire  
& Humber*  
**AHSN**



# **Health Innovation Exchange: Innovation in Rehabilitation and its application within the NHS**

**14:00 – 16:30 | 30 March, 2021**

## Joining Instructions

- The event is being hosted on Microsoft Teams
- Please join the webinar 5-10 minutes before the start time (14:00) so that we can ensure that we can begin promptly
- You will join the webinar in the Main Auditorium for the keynote speakers and will later be able to join various Break Out Rooms which are themed by areas of interest
- Please use the following agenda to determine which speakers and presentations you would like to listen to and follow the appropriate links to join each session. The links will also be made available in 'chat' during the event

# Event overview and links

Time	Room and link to join
14:00-14:40	<a href="#"><u>Main Auditorium</u></a>
14:45-15:45	<b>Virtual Marketplace</b> <ul style="list-style-type: none"><li>• Theme 1: <a href="#"><u>MSK (Sensors and Equipment)</u></a></li><li>• Theme 2: <a href="#"><u>MSK (Digital / Apps)</u></a></li><li>• Theme 3: <a href="#"><u>Stroke / Neurological</u></a></li><li>• Theme 4: <a href="#"><u>Pulmonary / Cardiac / Cancer</u></a></li><li>• Theme 5: <a href="#"><u>General Rehab</u></a></li></ul>
15:45-16:25	<a href="#"><u>Main Auditorium</u></a>
16:25-16:30	<b>Close</b>



# Agenda

## Main Auditorium

### 14:00-14:40

[Join](#)



Time	Speaker
14:00-14:05	<b>Welcome and Introduction:</b> Pete Waddingham Programme Manager, Yorkshire & Humber AHSN   <a href="#">Email</a>   <a href="#">Twitter: @PeteWaddingham</a>   <a href="#">Linkedin</a>
14:05-14:20	<b>New models of care and strategies for adoption:</b> Graham Walsh CCIO and Knee Surgeon, Calderdale and Huddersfield NHS Foundation Trust   <a href="#">Twitter: @Kneesolutions</a>
14:20-14:35	<b>Understanding rehabilitation as a driver to achieving better population health outcomes:</b> Dr Sally Fowler Davis Associate Professor – Organisation in Health & Care and Research Portfolio Lead – Systems and Services, The Advanced Wellbeing Research Centre
14:35-14:40	<b>Break Out Room instructions:</b> Pete Waddingham Programme Manager, Yorkshire & Humber AHSN

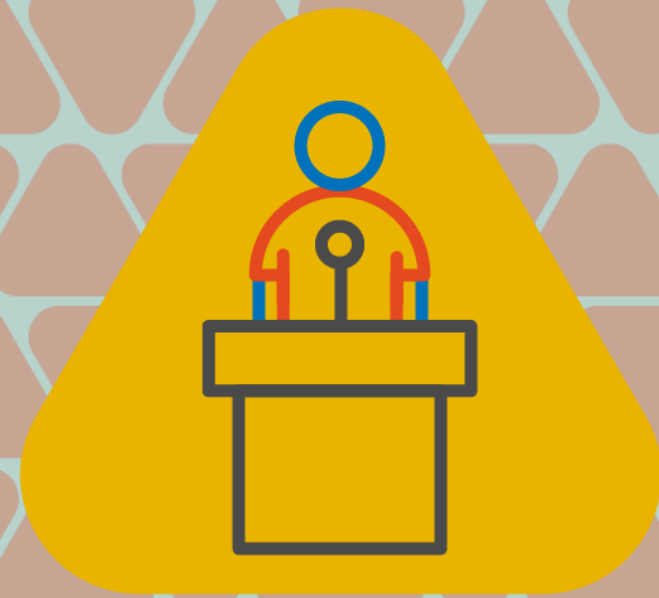
# Agenda

## Break Out

## Rooms

### 14:45-15:45

**Please note:** Company profiles can be found on pages 8-14



Time	Room 1: MSK (Sensors and Equipment)	Room 2: MSK (Digital / Apps)	Room 3: Stroke / Neurological	Room 4: Pulmonary / Cardiac / Cancer	Room 5: General Rehab
14:45-15:00	B Braun Medical Ltd	EQL (Phio)	Emego	patientMpower	Medimusic
15:00-15:15	JT Rehab	Rehab Guru	Motion Rehab	Sheffield Hallam University and Aseptika Ltd	Aparito
15:15-15:30	FLX Health	Physiobuddie	LusioRehab	Untire	EXi
15:30-15:45	SwordHealth	Advanced Digital Innovation (UK) Ltd	Steps Rehabilitation	Selfit	Neurological Rehabilitation at the Advanced Wellbeing Research Centre
<b>Link:</b>	<b><u><a href="#">Join</a></u></b>	<b><u><a href="#">Join</a></u></b>	<b><u><a href="#">Join</a></u></b>	<b><u><a href="#">Join</a></u></b>	<b><u><a href="#">Join</a></u></b>

# Agenda

## Main Auditorium

### 15:45-16:25

[Join](#)



Time	Speaker
15:45-16:25	<b>Facilitated Discussion:</b> Pete Waddingham Programme Manager, Yorkshire & Humber AHSN
16:25-16:30	<b>Close</b>



*Yorkshire  
& Humber*  
**AHSN**



**Break Out Rooms**  
**Company Profiles A-Z**

# Speakers, profiles and useful links

Company/ Product name	Overview	Speaker	Useful Links
<b>Advanced Digital Innovation (UK) Ltd</b>  <a href="#">@ADI Health LinkedIn</a>	ADI are the company behind the MyPathway App, which connects clinical providers to patients and enables remote management of clinical pathways and digital interaction with patients.	Richard Mangeolles Head of Business Development	<ul style="list-style-type: none"><li>• <a href="https://mypathway.healthcare/">https://mypathway.healthcare/</a></li><li>• <a href="https://mypathway.healthcare/pain-management/">https://mypathway.healthcare/pain-management/</a></li><li>• <a href="https://mypathway.healthcare/musculoskeletal/">https://mypathway.healthcare/musculoskeletal/</a></li></ul>
<b>Aparito</b>  <a href="#">@aparitohealth LinkedIn</a>	Aparito is a med tech company who specialise in capturing patient generated data and developing digital endpoints remotely. Aparito is a leader in innovative, patient-centric remote monitoring solutions. Atom5™ is a disease and language agnostic technology platform that can remotely provide clinical assessments at scale to encompass the complete rehabilitation pathway	Gary McNamara Senior Delivery Manager	<ul style="list-style-type: none"><li>• <a href="http://www.aparito.com">www.aparito.com</a></li></ul>



# Speakers, profiles and useful links

Company/ Product name	Overview	Speaker	Useful Links
<b>B Braun Medical Ltd</b>  <a href="#">@BBraunUK LinkedIn</a>	Remote Assessment Tool for Hip & Knee replacement patients utilising wearable technology & a downloadable app	Harriet Buck Strategic Partnership Manager	<ul style="list-style-type: none"> <li>• <a href="http://www.BPMpathway.com">www.BPMpathway.com</a></li> <li>• <a href="https://www.bbraun.co.uk/en/products-and-therapies/services/system-partnership/orthopaedic-pathway.html">https://www.bbraun.co.uk/en/products-and-therapies/services/system-partnership/orthopaedic-pathway.html</a></li> </ul>
<b>Emego</b>  <a href="#">@Emegoswitch LinkedIn</a>	An established assistive switch control that uses electromyography technology to pickup muscle movements. Exploring using this technology to help with stroke.	Jack Ackroyd Marketing and Business Development Manager	<ul style="list-style-type: none"> <li>• <a href="http://www.emego.co.uk">www.emego.co.uk</a></li> <li>• <a href="https://emego.co.uk/emego-link/">https://emego.co.uk/emego-link/</a></li> </ul>
<b>EQL. (Product name "Phio")</b>  <a href="#">@EQL_AI LinkedIn</a>	Triage through to self management. The Phio product range provides a single point of entry into the MSK pathway and where appropriate rapidly enables self-management and the opportunity for patients to take ownership of their recovery journey via an innovative and engaging digital app.	Peter Grinbergs Chief Medical Officer & Co-Founder  <a href="#">@petegrinbergs</a>	<ul style="list-style-type: none"> <li>• <a href="http://EQL.ai">http://EQL.ai</a></li> </ul>

# Speakers, profiles and useful links

Company/ Product name	Overview	Speaker	Useful Links
<b>Exi</b> <a href="#">@EXiTherapeuti</a> <a href="#">cs</a> <a href="#">LinkedIn</a>	Developed by physiotherapists, the EXi App uses an algorithm to analyse user health, current fitness level and disease status to prescribe a personalised and graduated physical activity programme which is set at the right level for each person and can help even the most sedentary get active.	Lewis Manning Co-founder EXi and Chartered Physiotherapist	<ul style="list-style-type: none"><li>• <a href="http://www.exi.life">www.exi.life</a></li></ul>
<b>FLX Health</b>	FLX APP uses clinically proven physiotherapy algorithms to identify your biomechanical profile, to treat existing issues and PROTECT against future musculoskeletal issues.	Rob Lewis Founder  <a href="#">@robdwlewis</a>	<ul style="list-style-type: none"><li>• <a href="https://www.flx.health/">https://www.flx.health/</a></li></ul>
<b>JT Rehab</b>  <a href="#">@JtRehab</a>	A portable leg strengthening device to speed up patient's recovery, prevent muscle deconditioning and improve physical outcomes after injury or illness.	Jennifer Turner MCSP SRP Founder and Director JT Rehab Ltd  <a href="#">LinkedIn</a>	<ul style="list-style-type: none"><li>• <a href="mailto:info@jtrehab.com">info@jtrehab.com</a></li><li>• <a href="http://www.jtrehab.com">www.jtrehab.com</a></li></ul>

# Speakers, profiles and useful links

Company/ Product name	Overview	Speaker	Useful Links
<b>LusioRehab</b> <a href="#">LinkedIn</a>	LusioMATE is especially designed for doing physical therapy outside of the clinician's appointment, as part of a home program. Furthermore, clinicians can monitor progress and update prescriptions remotely via the dashboard within the games.	Jamie Borg Head of UK Operations	<ul style="list-style-type: none"><li><a href="http://www.lusiorehab.com">www.lusiorehab.com</a></li></ul>
<b>Medimusic</b> <a href="#">@MediMusic</a> <a href="#">LinkedIn</a>	MediMusic uses digital fingerprinting, AI & machine learning to dispense music as medicine for the benefit of anxiety, pain relief & motor response - as well as providing a quantifiable ROI & multiple cost saving for healthcare services.	Gary Jones CEO	<ul style="list-style-type: none"><li><a href="https://medimusic.co">https://medimusic.co</a></li></ul>
<b>Motion Rehab</b> <a href="#">@ motionrehab</a> <a href="#">Facebook</a> <a href="#">LinkedIn</a> <a href="#">Instagram</a>	Neurological Rehabilitation MOTIONrehab's Intensive Neurological Rehabilitation centres based in Leeds and Hull are the UK's first highly Intensive Outpatient Neurological Rehabilitation facilities augmented by Robotics, Sensor-based and Virtual Reality devices.	Sarah Daniel Director	<ul style="list-style-type: none"><li><a href="https://www.motionrehab.co.uk/">https://www.motionrehab.co.uk/</a></li></ul>

# Speakers, profiles and useful links

Company/ Product name	Overview	Speaker	Useful Links
<b>Neurological Rehabilitation @ Advanced Wellbeing Research Centre</b>  <a href="#">@SHU_AWRC</a>	A research programme utilising expertise from within Sheffield Hallam and collaborative working with industry to drive innovation. Current projects include power-assisted exercise, exercise-based gaming, assistive technology and online exercise provision.	Dr Nicky Snowdon Senior Lecturer in Physiotherapy	<ul style="list-style-type: none"> <li>• <a href="https://www.shu.ac.uk/advanced-wellbeing-research-centre">https://www.shu.ac.uk/advanced-wellbeing-research-centre</a></li> </ul>
<b>patientMpower</b>  <a href="#">@patientMpower LinkedIn</a>	Remote clinical grade assessment and monitoring for patients with lung conditions - including application for the safe delivery of virtual pulmonary rehabilitation.	Jack Hanley Client Solutions Manager	<ul style="list-style-type: none"> <li>• <a href="https://info.patientmpower.com/">https://info.patientmpower.com/</a></li> </ul>
<b>Physiobuddie</b>  <a href="#">@Physiobuddie1 LinkedIn</a>	Physio Rehab App	Matt Booth Founder	
<b>Rehab Guru</b>  <a href="#">@rehab_guru LinkedIn</a>	Digital Home Exercise Prescribing with patient app	Kate Pym AMIHM (Mid) Business Development Associate	<ul style="list-style-type: none"> <li>• <a href="http://www.rehabguru.com">www.rehabguru.com</a></li> <li>• <a href="https://www.rehabguru.com/features">https://www.rehabguru.com/features</a></li> </ul>

# Speakers, profiles and useful links

Company/ Product name	Overview	Speaker	Useful Links
<b>Selfit</b>  <a href="#">LinkedIn</a>	Selfit Medical is a digital therapy startup, with a robotic care solution focusing on the ageing population. A unique human-machine interaction, based on a therapist robot designed for neurological and cardiovascular patients, with several clinical and wellness use cases.	Shahar Figelman CEO	<ul style="list-style-type: none"> <li>• <a href="https://www.selfitmedical.com/">https://www.selfitmedical.com/</a></li> </ul>
<b>Sheffield Hallam University and Aseptika Ltd</b> <b>Active+me</b> <b>REMOTE</b>  <a href="#">@sheffhallamuni</a> <a href="#">LinkedIn</a> <a href="#">@Activ8rlives</a> <a href="#">LinkedIn</a>	Active+me REMOTE Cardiac Recovery programme / Automating the delivery of Pulmonary Rehabilitation.	Dr Simon Nichols FBASES Senior Research Fellow, Exercise Physiology BACPR Council Member Associate Editor, British Journal of Cardiology AWRC  Kevin A Auton Ph.D Managing Director, Aseptika Ltd	<ul style="list-style-type: none"> <li>• <a href="http://www.activ8rlives.com">www.activ8rlives.com</a></li> <li>• <a href="https://www.yhahsn.org.uk/news/self-care-week-improving-the-way-cardiac-patients-access-vital-rehabilitation-services/">https://www.yhahsn.org.uk/news/self-care-week-improving-the-way-cardiac-patients-access-vital-rehabilitation-services/</a></li> </ul>

# Speakers, profiles and useful links

Company/ Product name	Overview	Speaker	Useful Links
<b>Steps Rehabilitation</b> <a href="#">@STEPSrehabUK</a> <a href="#">LinkedIn</a>	STEPS Rehabilitation opened in May 2017 by founders, directors (and sisters) Jules Leahy and Toria Chan. STEPS deliver intensive and ongoing rehabilitation for people recovering from brain injury, spinal cord injury, strokes and complex trauma injuries, enabling them to reach their full potential and to rebuild their lives.	Jules Leahy Business Development Director	<ul style="list-style-type: none"><li>• <a href="http://www.stepsrehabilitation.co.uk">www.stepsrehabilitation.co.uk</a></li></ul>
<b>SwordHealth</b> <a href="#">@swordhealth</a> <a href="#">LinkedIn</a>	A digital musculoskeletal care solution that pairs Physiotherapists with a certified sensor medical device to deliver Physiotherapy and Wellness programs (like falls prevention) directly at home.	André Eiras dos Santos Founding Team and VP of Business Development	<ul style="list-style-type: none"><li>• <a href="https://swordhealth.com/">https://swordhealth.com/</a></li></ul>
<b>Untire</b> <a href="#">@Untire App</a> <a href="#">LinkedIn</a>	An evidence-based fatigue programme proven effective in reducing cancer-related fatigue and improving quality of life for cancer patients and survivors.	Door Vonk, CCO & Co-founder Megan Simpson, Partnership Manager, UK	<ul style="list-style-type: none"><li>• <a href="http://www.untire.me">www.untire.me</a></li><li>• <a href="https://www.youtube.com/watch?v=J5vnGtR8dB8">https://www.youtube.com/watch?v=J5vnGtR8dB8</a></li></ul>



# Transforming Lives Through Innovation

**Photography:** Welcome to Yorkshire | <https://www.yorkshire.com/>



*Yorkshire  
& Humber*  
**AHSN**

**Web:** [www.yhahsn.org.uk](http://www.yhahsn.org.uk)

**Email:** [info@yhahsn.com](mailto:info@yhahsn.com)

**Twitter:** @YHAHSN

**LinkedIn:** Yorkshire & Humber  
Academic Health Science Network